



# ADM for Engineering Consultancy & Studies

## Profile

Azzehur District, Mohamed Najeeb Street  
Alniema Laundry Building Floor 1  
Khartoum – Sudan P.O.Box 6717  
Tel.: +249155303833 Fax: +249155303933  
[admforengineeringconsultancy@gmail.com](mailto:admforengineeringconsultancy@gmail.com)

**ADM FOR ENGINEERING CONSULTANCY & STUDIES** is a business name founded in February 2016, based in Khartoum. ADM is multi-discipline civil engineering and environmental services dedicated to the creation, cost-effective solutions to the engineering challenges of Sudan. It aims to serve communities with high professional consulting services to both government and private sectors at localities, states, and federal levels.

ADM has excellent facilities regarding equipment's, tools and qualified personnel in the latest engineering technology that will contribute positively to help meet the Sudan and beyond growing needs for advanced consulting in engineering, economics, science, technology and spatial management, research and capacity building.

### *Our Vision:-*

To deliver excellently and value-added professional services to our clients at all levels

### *Our Values:-*

- Excellence
- Integrity
- Efficacy
- Accountability
- Professionalism

### *Mission:-*

Our mission is to develop a highly qualified solution and committed professionals who will play a leading role in the sustainable development of Sudan and its integration into the regional and global economy.

ADM's committed and passionate about providing professional, timely, comprehensive consulting services to our clients, using a balance of innovation and practicality.

### *Business Links:*

To promote cooperation, knowledge, and technologies transferred from outside Sudan, **ADM** established stable relationships with an A-level consultant company The **MAPPER** Co. Ltd based in Thailand.



## *Ongoing Activities:*

Since our company registration as a consultant then, we have been asked to offer our services to many government organizations such as the federal ministry of finance, Khartoum State, West Kordofan State, National Highway Authority, etc.

The consultancy areas include the following projects:

- Development of Asset Management System(in the contracting stage- Client Federal Ministry of Finance)
- Traffic Count Study (in negotiation stages- Client Khartoum State)
- Road Safety Auditing Study for Atbara – Haiya – Port Sudan Road Project
- ( Completed – Client NHA)
- Household & Street Lighting Solar Project(Implementation stages – Client West Kordofan State)
- El Fula – Babanusa Road Project(Contracted – Client West Kordofan) -  
Nyala – Gerida – Buram Road Project (Contracted – Client NHA)
- Eldeain City Roads Study & Design
- \* EL Deain City Roads Consultancy Services
- \* Road Safety Auditing Study for Khartoum –Elgaili - Shandi -Atbara – Road Project

With our unique and capable staffs working since the first day, we are confident in our skills, and team spirit to drive the quality of work that will meet our customers Satisfaction.

## *Brief Description of the ongoing projects:*

### **3. Road Safety Auditing Study for Atbara – Haiya – Port Sudan Road Project**

The road lies in two states, mainly the River Nile State and the Red Sea State linking between Atbara and Port Sudan through Haiya with a total length of 487 km. The road consisted of two parts. The first Lot is Atbara-Haiya link which is about 278 km implemented and opened for operation by 2007. While the second lot is Haiya- Port Sudan link approximately 209 km and forming part of the existing asphalt road which extends from Khartoum to Kassala, Haiya, and Port Sudan (about 1200 km in length), and this

section operated since the early seventeen's of the last century. The selected design speed for this road was 100km/hr. The speed limit for the most sections is 100 km/hr. The overall objective of this study components is to contribute positively to reduction and prevention of the risk of accidents occurring on the national roadway Atbra – Haiya – Port Sudan and to minimize their severity. While the detailed objectives include

- To define and suggest the appropriate countermeasures addressing the worst accident types and locations in the mentioned roadway section.
- To help to enhance the understanding of traffic safety situation in the national road network.
- To recognize the importance of safety in highway planning and design stages
- To help in reducing the long-term costs of roadway design and improvements



**Figure 1:** ADM RSI & RA Assessment Team



**Figure 2:** ADM Levelling & All – directions videoing with mounted GPS equipment's



**Figure 3:** Images from Atbara – Haiya Road Section



**Figure4:** Images from Haiya – Port Sudan Road Section

#### **4. Household & Street Lighting Solar Project – West Kordofan**

The West Kordofan State is not connected to the national power grid as such the functionality of public sector services, and the development of private businesses is severely affected by the lack of clean, reliable power. Therefore, the state has decided to electrify public sector service institutions and residence of key government officials to maintain the state service functionally to an adequate level that meets the need of the population and foster development in the state.



The project is intended to cover government offices, police and security, schools, judiciary, hospitals and veterinary services and mosques in 7 localities across the state. In addition to the provision of public street lighting systems at main towns.

To implement this project, West Kordofan State is seeking the service of the qualified supplier(s)/contractor(s) to supply, delivery, install at the respective sites and commission Photovoltaic solar energy systems and associated services that meet the quality and standards required for such project works. The ADM role extended from designing and preparation of the project document to the supervision of the implementation stages.



**Figure5:** Images from West Kordofan State Solar Project

## 5. El Fula – Babanusa Road Project

This project aims to review, examine and revise the existing road design to ensure meeting the higher standards regarding both geometric and structural parameters that will satisfy the safety and quality requirements. On the other hand, the project work also includes the monitoring and supervision of the road construction work activities and treating them promptly, in a way that will meet the contractor implementation time schedules

## 6. Nyala – Geraida – Buram Road (Phase one 42 km)

The road lies in South Darfur state linking between Nyala and Buram through Gerida with the length of 136 km; the contracted civil works include construction of the roadway. The work consists of clearing and grubbing, construction of embankment, subbase, base layers, asphalt later, shoulder filling, box culverts, pipe culverts and Road furniture.

The overall development objectives of road construction in South Darfur State are to facilitate the country's economic and social recovery through improved physical access to goods, markets, and administrative and social services, a key impediment to reconstruction and development.



**Figure6:** Images from Nyala – Geraida – Buram Road (Phase one 42 km) Project – Embankment Work (First Layer)



## 7. Eldeain City Roads Study & Design

The roads lies in East Darfur state at Eldeain City. The project is intended to cover internal roads with approximately 26 km

The study was include:

Topographical survey

Survey of water Resource

Hydrological and Geological Survey

Soils and Materials Survey

Reveal the final Design of alignment

Drainage structure, production work

Prepare special Technical Specifications According NHA guide    Prepar  
Detailed BOQ



Figure 7: Images from Eldeain City Road (26 km) Project

## 8- EL Deain City Roads Consultancy Services

The overall development objectives of road construction in East Darfur State are to facilitate the country's economic and social recovery through improved physical access to goods, markets, and administrative and social services, a key impediment to recovery and development.

The project is intended to cover two main roads (Airport road- University Road), the contracted civil works include construction of the road. The work consists of clearing and grubbing, construction of embankment, sub base, base layers, asphalt layer, shoulder filling, box culverts, pipe culverts and Road furniture



Figure 8: Images from Eldeain City Road Project



## **9- Road Safety Auditing Study for Khartoum –Elgaili - Shendi -Atbara – Road Project**

The road lies in two states, mainly the Khartoum State and the River Nile linking between Khartoum and Atbara through Shendi with a total length of 301 km. The road consisted of two parts. The first Lot is Elgaili-Shendi link which is about 130 km implemented and opened for operation by 2007. While the second lot is Shendi- Atbara link approximately 170 km.

Section operated since the early nineteen's of the last century. The selected design speed for this road was 100km/hr. The speed limit for the most sections is 100 km/hr.

The overall objective of this study components is to contribute positively to reduction and prevention of the risk of accidents occurring on the national roadway Khartoum – Atbara and to minimize their severity. While the detailed objectives include

- To define and suggest the appropriate countermeasures addressing the worst accident types and locations in the mentioned roadway section.
- To help to enhance the understanding of traffic safety situation in the national road network.
- To recognize the importance of safety in highway planning and design stages
- To help in reducing the long-term costs of roadway design and improvements

## **10. El Fula – Babanusa Road Project Redesign**

The roads lies in West Kordofan state a. The project is intended to cover road with approximately 45 km

The study was include:

Topographical survey of water Resource

Hydrological and Geological Survey Soils and Materials  
Survey

Reveal the final Design of alignment

Drainage structure, production work

Prepare special Technical Specifications According NHA  
guide Prepare Detailed BOQ

A Multi-Purpose Affordable Housing (Real Estate) Project  
Pre-Feasibility Study –Report Summary  
SUDAN, OCTOBER 2018



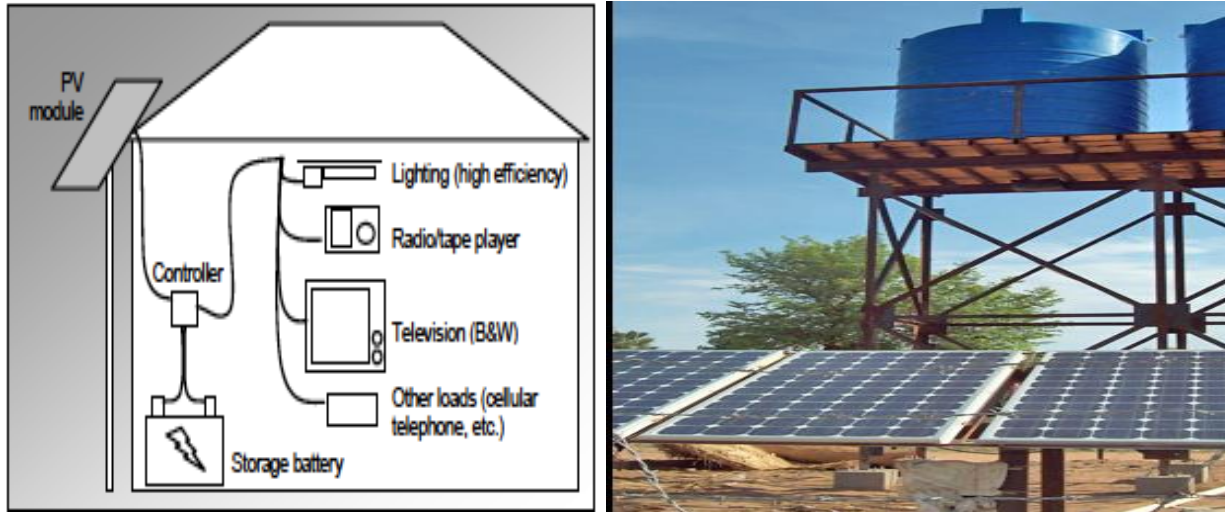
The primary objective of this study is to determine the pre-feasibility of establishing a multi-purpose real estate project in the capital city of Khartoum and other states. This project aligns with the Ministry's urban development and housing provision goals. Therefore, it offers all services such as serviced residential apartments, business offices, restaurants, cafes, swimming pools, roads & parking lots, and other services such as electricity, water, and sewage systems required for the project within a safe and clean environment. The project is designed to fulfil the needs of a particular customer group for a specific real estate product that focuses on quality, location, services, and affordable prices. The project consists of nearly 64,000 units with different designs in different areas. The following table shows the project's initial parameters and indicators.

**Table 1. The project's initial indicators**

Project Name	Sudan Multi-purpose affordable housing (real estate) project
Sector	Services – Real estate
Owner	National Fund for Housing & Reconstruction (NFHR)
Location	Khartoum & other states
Services	<ul style="list-style-type: none"> <li>• Serviced residential flats &amp; apartments with private ownership</li> <li>• Energy systems</li> <li>• Water supply</li> <li>• Sewage systems</li> <li>• Commercial Offices</li> <li>• Restaurants and Cafes</li> <li>• Swimming pools</li> <li>• Fitness Centres</li> <li>• Retail Stores and Shops</li> <li>• Maintenance, cleaning, guarding, and horticultural services</li> <li>• Multi-purpose halls</li> <li>• Parking lots</li> <li>• Roads</li> <li>• Schools</li> <li>• Clinics</li> <li>• Masjids</li> <li>• Police stations</li> <li>• Etc.</li> </ul>
Project Description	<p>A multi-purpose real estate project will be established in Sudan. The proposed design capacity of the project is nearly 64,000 housing units. These units will be designed to cater to a diverse range of needs, from compact and affordable apartments to spacious and luxurious penthouses, ensuring that the project appeals to a wide range of potential buyers or tenants.</p> <ul style="list-style-type: none"> <li>• 30,000 units in Khartoum with a total land area of 3,343,104 m<sup>2</sup> and a total built-up area of 3,945,000 m<sup>2</sup>.</li> <li>• 33,615 units in other states of Sudan with an entire land area of 15,519,930 m<sup>2</sup> and a total built-up area of 2,242,136 m<sup>2</sup>.</li> <li>• The lease price of commercial areas in Khartoum starts at 100 US\$/m<sup>2</sup>/annually, while in other states, it is around 50 US\$/m<sup>2</sup>/annually.</li> <li>• The sale price of the floors in Khartoum begins at 360 US\$/m<sup>2</sup>, while in other capital states, around 310 US\$/m<sup>2</sup></li> </ul> <p>The project will have up to 3,510 employees, 80 % of whom are of Sudanese nationality.</p>
Target Market	<ul style="list-style-type: none"> <li>• Low &amp; moderate-income Sudanese within Sudan.</li> <li>• High-income Sudanese within Sudan.</li> <li>• High-income expatriate Sudanese.</li> </ul>

	<ul style="list-style-type: none"> <li>• Arab, African, and foreign residents and tourists with high incomes.</li> </ul>
Investment Cost	US\$ 1.873 billion
The Average Return on Investment	21.1 %
Internal Rate of Return	1.95 %
Average Added Value of the Project	US\$ 62.5 million
The Project Rationality & Justifications	<p>The project is not just a business venture but a solution that aligns with the specific needs of the Sudanese community. By focusing on quality, location, services, and affordable prices, the project reassures the audience of its potential to meet their needs and expectations.</p> <ul style="list-style-type: none"> <li>• Workforce Employment</li> </ul>
Partners/ Stakeholders	Ministry of Finance & Economic Planning, National Fund for Housing & Reconstruction (NFHR) & the MD&H Company

**Rwanda Renewable Energy Project Pre – Feasibility Study Summary**  
**Kigali, April, 2019**



The primary objective of this proposal is to determine the pre-feasibility of establishing a multi-purpose renewable energy project in Rwanda. Therefore, it offers all services such as Solar Home Systems (SHS), Solar Mini –water Yard Stations (SMWYS), Solar Street Lighting Systems (SSLs), and Biodiesel Fuel produced from used cooking oil. The project is designed to fulfil the needs of a particular customer group for specific needs in both rural and urban areas that focus on quality, location, services, and affordable prices. The project consists of 4 renewable energy categories with different designs in different places.



The following table shows the project's initial parameters and indicators.

**Table 1. The project's initial indicators**

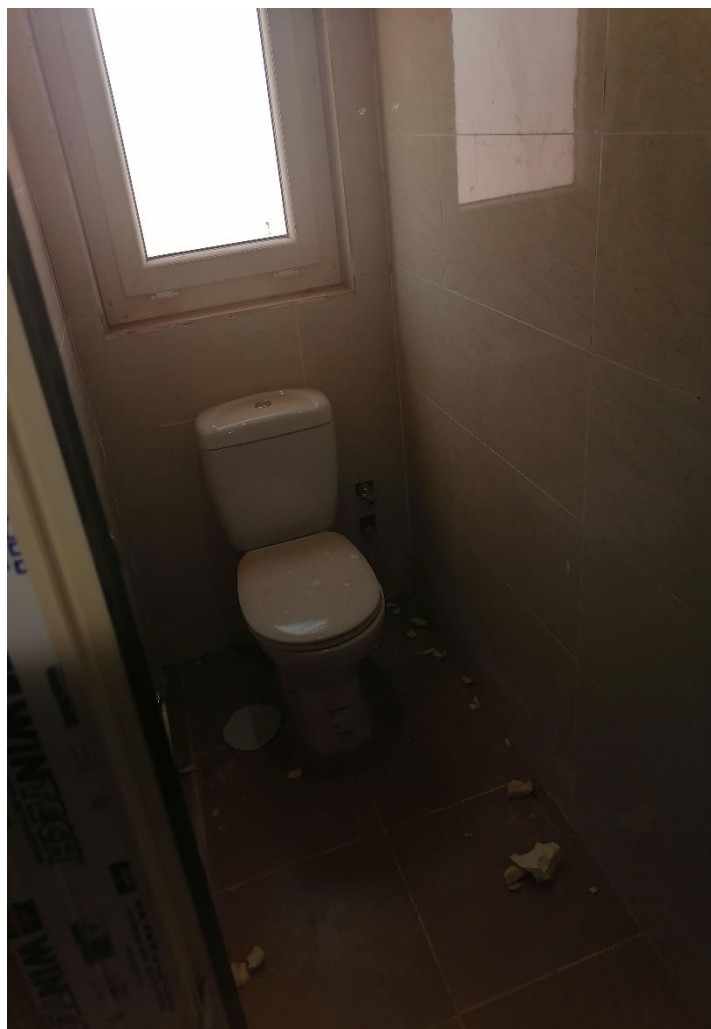
Project Name	Rwanda Renewable Energy Projects Proposal
Sector	Energy
Owner	ELRUMALYA RWANDA
Project Beneficiaries	Rwandan People
Location	The capital city Kigali & other regions
Project Description	<p>This project aims to establish a multi-purpose renewable energy project in Rwanda, including Kigali city and other cities and villages within Rwanda. Hence, it offers four primary services: standalone SHS, solar street lighting systems, solar mini–water yard stations, and ASTM-grade biodiesel machines. The project facilities required by most customer group segments will be provided in a safe and clean environment. The project consists of four components:</p> <ul style="list-style-type: none"> <li>• Standalone Solar Home System (SHS). <ul style="list-style-type: none"> <li>○ SHS of 35,000 units classified as: <ul style="list-style-type: none"> <li>▪ 20,000 SHS for lighting households in rural areas.</li> <li>▪ 10,000 SHS for lighting households in urban areas</li> <li>▪ 5,000 solar system units for lighting basic services buildings (schools, clinics, youth clubs, churches, mosques, police stations, etc.....</li> </ul> </li> </ul> </li> <li>• Solar Mini – water Yard Stations <ul style="list-style-type: none"> <li>○ Solar Mini – water Yard, including Stations <ul style="list-style-type: none"> <li>▪ 100(20/year) Solar Mini – water yards that can serve 2,000,000 people (400,000 households with safe drinking water 15liters/person/day).</li> <li>▪ 100(20/year) Solar Mini – water yards that can serve 1,000,000 people (200,000 households with safe drinking water 15liters/person/day).</li> </ul> </li> </ul> </li> <li>• Solar Street Lighting System <ul style="list-style-type: none"> <li>○ AE3C ALL-IN-ONE type 7,000 units Solar Street Light according to the flowing spacing &amp; height: <ul style="list-style-type: none"> <li>▪ Spacing 23 – 35 m.</li> <li>▪ Height 5 – 8 m.</li> </ul> </li> </ul> </li> <li>• Small-Scale Biodiesel Production (100 units) <p>The BioPro™: two sizes, two processing options:  1. The BioPro™ 190EX converts 50 gallons (190 litres) of used cooking oil into 50 gallons of ASTM-grade biodiesel every 23 hours.</p> </li> </ul>

	2. The BioPro™ 380EX converts 100 gallons (380 litres) of used cooking oil into 100 gallons of ASTM-grade biodiesel every 23 hours.
Target Market	<ul style="list-style-type: none"> <li>• Low &amp; moderate-income Rwandans within Rwanda.</li> <li>• High-income Rwandans within Rwanda.</li> <li>• African and foreign residents of high income.</li> </ul>
Investment Cost	US\$ 48.5 million
The Average Return on Investment (%)	9.10
Internal Rate of Return (%)	7.10
Payback period (Year)	4.37
Average Added Value of the Project	US\$ 6.43 million
Average Number of Employees	1,150 (More than 80 % of them are Rwandans)
CO2 Reduction (Tons) This project is expected to reduce CO2 emissions by 134,064 tons, contributing significantly to environmental sustainability.	134,064 (Tons)
The Project Rationality & Justifications	<ul style="list-style-type: none"> <li>• The project targeted specific categories of the Rwanda community's needs for fundamental services, concentrating on quality, location, and affordable prices.</li> <li>• Workforce Employment</li> </ul>
Partners/ Stakeholders	Republic of Rwanda, ELRUMALYA RWANDA, Other Partners











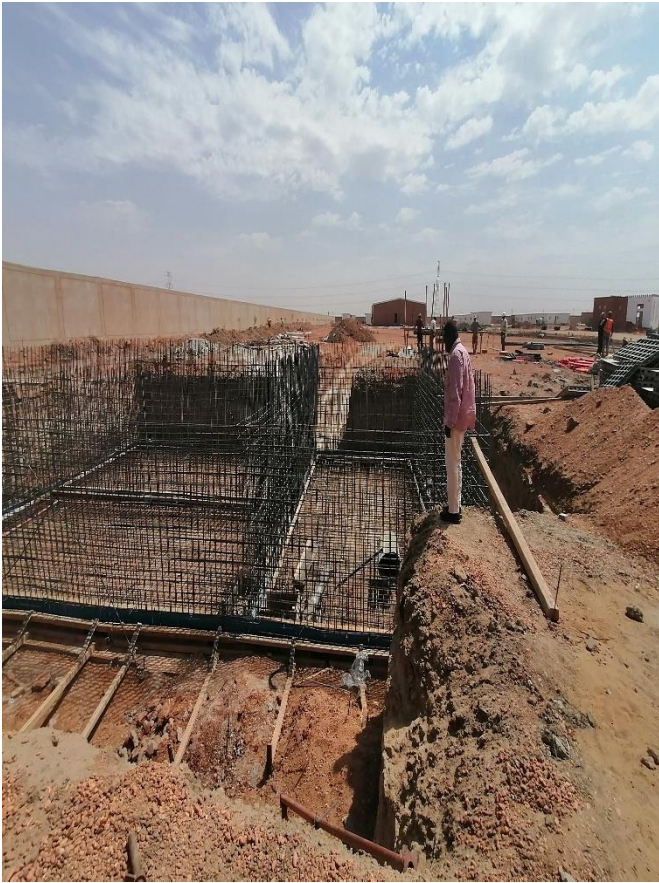


Figure 9: Images from Jabal Camp Project

## ADM Staff

Core Staff List	Academic Background	Specialization	Experiences	Position/Relation
Adam I.A. Mofadal	B.Tech M.Sc. Dr. Eng.	Civil/Transportation Engineering/ Traffic Management & Safety	26 years	G.D. (Founder)
Mohamed E.E. Mahdi	B.Tech MBA	Mechanical/ Production	26 years	Deputy G.D. Partner
Mufadal I. A. Mufadal	B.Sc. M.Sc.	Applied Physics/Renewable Energy	16years	Technical Manager
Ahmed Yousuf Shambal	B.Sc. M.Sc.	Civil/Structures	8Years	Deputy Project Manager
Khalid Bashir Ahmed Reima	B.Sc. M.Sc.	Civil/Structures	13 Years	Project Manager
Mahmoud Kh. M. Ahmed	Diploma B.Sc.	Accounting/Auditing	16 years	Finance Manager
Aladdin A. Mohamed	B. Sc. M.Sc.	Telecommunication Engineering/IT	3 Years	Program Officer
Sara A.A. Mohamed	B.Sc. M.Sc.	Forestry/Remote sensing	5 Years	Secretary/Administration
Sana K. Mohamed	B.Sc.	Civil/Structures	12 Years	Structural Designer
Anas A.E. ELsaied	Diploma B.Sc.	Survey Engineering	16 Years	Site Manager
Hassan I. A. Mofadel	B.Sc. M.Sc. Ph.D.	Agriculture/Crop & postharvest physiology	28 Years	Collaborator
Tagelsir B. A. Dirar	B.Sc. M.Sc. Ph.D. Prof.	Agricultural Biochemistry Environmental Science & Technology Soil Microbiology	45 years	Collaborator
Mohammed Nur A. A. Elsafi	Diploma B. Eng. M.Sc.	Civil Engineer/Highway Materials	28years	Collaborator
Abdullah Elsaddig Abdullah	B.Tech	Civil/Transportation Engineering	26years	collaborator
Bashari I. Bashari	B.Sc. M.Sc. Ph.D.	Agriculture/Crop & postharvest physiology	16 Years	Collaborator
Salaheldin Y.H. Modawi	Diploma B.Tech M. Sc.	Civil/Bridge Design & Construction	28 Years	Collaborator
Khalid M. E. Mahmoud	B.Sc. M.Sc.	Forestry/Rural Development	17 Year	Collaborator
Adam Mohamed Gibreel	B.Sc. M.Sc.	Survey Engineering	30 Year	Collaborator

Abdullah S. Mohamed	B.Tech M. Sc.	Mechanical/Production	20Years	Collaborator
Yassin E.M. Abdullah	Bachelor M.Sc. PhD	Business/Economic	27Years	Collaborator
Salih Elnair	Bachelor MBA CPA	Business/Economic	22Years	Collaborator
Ibrahim Haroun Hamid	B. Tech	Civil/Transportation Engineering	20 Years	Collaborator
Adam Mohamed Adam	Bachelor M.Sc. Ph.D.	Accounting/Auditing	27 Years	Collaborator
Mansour Abdullah Yahya	B. Sc.	Architecture Engineering	30Years	Collaborator
Isameldin A.A. Ali	B.Sc. M.Sc. Ph.D.	Civil/Hydraulic Hydrology & Water Resources Management	22 Years	Collaborator
El – Sharif M. Ibrahim	B.Sc. M.Sc. Ph.D.(Candidate)	Industrial & Civil Engineering	23Years	Collaborator
Aiesha A. Alsiddig Ali	B. Sc.	Environment	2 Years	Collaborator
Siddig A. Hassan	B.Sc.	Electrical Engineering/ Renewable Energy	19 Years	Collaborator
Gaafar Abdullah Hassan Ali	Diploma B.Sc.	Surveying	2 Years	Assistant Survey Engineer
Hamid Mohamed Alradi Hamid	B.Sc.	Civil/Materials	4 Years	Lab. Technician
Mohamed Abdelrahman Elamin	B.Sc. M. Sc.	Surveying/Remote Sensing	35 Years	National Resources Management Specialist





بِسْمِ اللَّهِ الرَّحْمَنِ الرَّحِيمِ  
جُمْهُورِيَّةُ السُّودَانِ  
وزارة البنية التحتية والنقل  
الهيئة القومية للطرق والجسور  
المدير العام

مدق / م / ج / طريق الفولة - بابنوسة / 2020

29 مارس 2020

### شهادة إنجاز

تشهد الهيئة القومية للطرق والجسور بأن الاستشاري أي دي ام للاستشارات الهندسية و الدراسات  
قد اكمل دراسة و تصميم وصلة طريق بابنوسة التي تربط مع طريق الفولة المجلد في منطقة  
البرصاية بطول 45 كلم.

وهذا منا للاعتماد.

م / عبدالرحمن ابراهيم  
ع / المدير العام





2

جمهورية السودان  
وزارة النقل والطرق والجسور  
الهيئة القومية للطرق والجسور  
NATIONAL HIGHWAY AUTHORITY  
المدير العام  
General Manager

٩/١٢/٢٠١٨

التاريخ 2018/1/16

السيد/ مدير مكتب التنسيق و المتابعة - ولاية شرق دارفور  
السلام عليكم و رحمة الله تعالى و بركاته

الموضوع: مراجعة واعتماد التصاميم الخاصة بطرق الضعين الداخلية

اشارة للموضوع اعلاه و لخطابكم بتاريخ 2018/1/14 بالنمرة م و ق د / 61 / هـ / 1 و الخاص بمراجعة و اعتماد تصاميم الطرق الداخلية لمدينة الضعين نفيدكم بانه قد تمت مراجعة التصاميم واعتمادها.

وشكرا

٢٠١٨/١٢/٩

م. عبدالرحمن ابراهيم

المدير العام بالاتاقية



التاريخ : 22 / يناير / 2018 م

### شهادة استلام

- تشهد وزارة المالية والاقتصاد والقوى العاملة - ولاية شرق دارفور بإستلام خطاب وزارة النقل والطرق والجسور الموقع من قبل الهيئة القومية للطرق والجسور والخاص بإعتماد تصاميم الطرق الداخلية لمدينة الضعين المعد بواسطة شركة (ADM) للدراسات والاستشارات الهندسية .
- وهذه شهادة إستلام لمن يهمهم الأمر .



مدير عام وزارة المالية والاقتصاد والقوى العاملة





النمرة: هـ/ق/ط/ج/السلامة المرورية/2018/1

التاريخ: 20 فبراير 2018م

السيد/ المدير العام – شركة اي دي ام للاستشارات الهندسية والدراسات  
السلام عليكم ورحمة الله و بركاته،

الموضوع: استلام المستندات النهائية

**ROAD SAFETY AUDITING (ATBARA-HAIYA-PORT SUDAN)**

**ADM for Engineering Consultancy & Studies**

بخصوص الموضوع أعلاه.. والعقد الموقع بتاريخ 19-12-2016م، بين الهيئة  
القومية للطرق والجسور وبين شركتكم ADM for Engineering Consultancy &  
Studies للقيام بمراجعة أعمال السلامة المرورية بطريق عطبرة – هيا – بورتسودان،  
نفيدكم بأنه تم استلام المستندات النهائية بتاريخ 3 ديسمبر 2017م وذلك وفقاً لمطلوبات  
العقد المشار اليه.

وهذا منا للاعتماد.

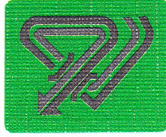
وشكراً،،،

21 - 2 - 2018

م.م جعفر حسن آدم

المدير العام





REF:NHA/ROADSAFETY/2018/1

DATE: 20-02-2018

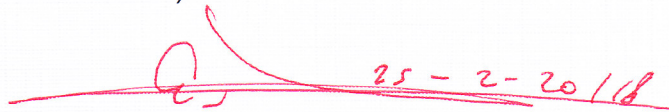
**TO: The General Manager  
ADM for Engineering Consultancy & Studies**

Dear Sirs,

**Subject: ROAD SAFETY AUDITING (ATABAR-HAIYA-PORT SUDAN ROAD)  
HANDING OVER OF THE FINAL DOCUMENTS**

With reference to the above-mentioned subject and Contract Signed on 19-12-2016, between the National Highway Authority and ADM for Engineering Consultancy and Studies, to carry out the Road Safety Auditing Works for Atbara-Haiya-Port Sudan Road), we hereby received the Final Documents, on 03-12-2017, as per Contract requirements.

Thanks,



Eng. Gaafer Hassan Adam

**Director General**



بِسْمِ اللَّهِ الرَّحْمَنِ الرَّحِيمِ

جُمْهُورِيَّةُ السُّودَانِ



وزارة العدل

إدارة التسجيلات التجارية

قانون تسجيل أسماء الأعمال لسنة ١٩٣١م

شهادة التسجيل



رقم الشهادة : ١٠٠٦٠٤

أشهد في هذا بأن . ادم ابراهيم علي مفضل -سوداني-

هو المالك المسجل للاسم :-

- اي دي ام للدراسات والاستشارات الهندسية -

قد سجل طبقاً لأحكام قانون تسجيل أسماء الأعمال لسنة ١٩٣١م  
و اللائحة الصادرة بمقتضاه.

صدرت هذه الشهادة تحت توقيعي في الخرطوم

في اليوم ..... الرابع من شهر فبراير سنة ألفين و ست عشرة

بتول حماد أحمد حمد  
مسجل أسماء الأعمال

بالإنابة



In The Name of Allah The Most Gracious The Most Merciful



The Republic of The Sudan  
Ministry of Justice  
Commercial Registrations Department



The Registration of Business Names Ordinance, 1931

Certificate of Registration

No. of Certificate : 100604

It is hereby Certified that :

-- ADM FOR ENGINEERING CONSULTANCY & STUDIES --



Being the Property of :-

ADAM IBRAHIM ALI MOFADAL - SUDANESE -

has been duly registered pursuant to and in accordance with the provision of  
the Registration of Business Names Ordinance, 1931 and the Regulation there  
under.

*Given under my hand at Khartoum*

this FOURTH day of FEBRUARY Two thousands and SIXTEEN

*BATOUL HAMMAD AHMED HAMAD*  
Registrar of Business Names



## مجلس تنظيم بيوت الخبرة للخدمات الإستشارية

### شهادة تسجيل

بهذا يشهد المجلس بأن السادة/ **أي دي أم للمدراسات والاستشارات الهندسية**  
قد تم تسجيله بيت خبرة استشاري تحت قانون تنظيم بيوت الخبرة للخدمات الاستشارية لسنة  
١٩٩٩م معدل ٢٠٠٤م في السجل الاستشاري تحت الرقم (٤٢٥) حسب القواعد المنظمة للعمل الاستشاري  
صدر تحت توقيعي و ختم المجلس في يوم ١ شعبان ١٤٢٧ هـ الموافق ٨ مايو ٢٠١٦ م.

د. شرف الدين إبراهيم باقنا

رئيس المجلس



عمر فضل الله حمد النيل

الأمين العام (المكلف)





*In The Name Of God Most Gracious Most Merciful*

**SERIAL NO.**

**P (526)**



**ORGANIZING COUNCIL FOR CONSULTANCY FIRMS**  
**REGISTRATION CERTIFICATE**

It is hereby certified that/**ADM FOR ENGINEERING CONSULTANCY& STUDIES** is registered as a consultancy firm under the **OCCF** 1999 amended 2004 Act and the Council's Rules and Regulations.

Registration Number in the **OCCF** Consultant's Register is (425)  
Issued under our signatures and Council's Seal on 8 May 2016

**Eng. Omer Fadl Alla Hamad Elnil**  
**For/Secretary General**



**Dr. Sharaf El Din Ibrahim Bannaga**  
**Chairman**



النمرة: م ت ب خ / ٥٠٥ / ٢٠١٦

التاريخ: ١ شعبان ١٤٣٧ هـ

الموافق: ٨ مايو ٢٠١٦ م

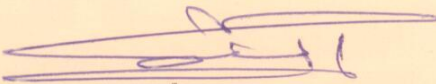
السادة/ اي دي ام للدراسات والاستشارات الهندسية

السلام عليكم ورحمة الله وبركاته،،،

يسرنا أن نخطرکم بأن المجلس قد صدق بتسجيلکم کبيت خبرة إستشاري دائم تحت قانون مجلس تنظيم بيوت الخبرة للخدمات الاستشارية لسنة ١٩٩٩م معدل ٢٠٠٤م، وأصدر الشهادة رقم (٥٢٦) والسجل الإستشاري رقم (٤٢٥) للعمل في مجالات (معمارية وتخطيط عمراني - هندسية - تقييم اصول - بيئية - زراعية - نقل).

متمنين لكم دوام التقدم والمساهمة في تقدم البلاد.

وشكراً،،،



م م . عمر فضل الله حمد النيل

الأمين العام (المكلف)







النمرة : م ت ب خ / ٥٠٥ / ٢٠١٦

التاريخ : ٢ شعبان ١٤٣٧ هـ

الموافق : ٩ مايو ٢٠١٦ م

السيد / مدير عام الإدارة العامة لتنظيم وتنمية الجهاز المصرفي

بنك السودان المركزي

(السلام عليكم ورحمة الله وبركاته...)

الموضوع : قائمة بيوت الخبرة لمجال تقييم الأصول والتقييم العقاري

إحاقاً إلى خطاباتنا السابقة لكم في ما يخص الموضوع أعلاه، تجدون طيه قائمة بيوت الخبرة التي تقدمت بطلب لإضافة مجال تقييم الأصول وأستوفت شروط المجلس لإضافة مجال تقييم الأصول وتم إعتمادها من قبل لجنة التسجيل والتصنيف للعمل في هذا المجال.

نرجو إضافة بيوت الخبرة بالقائمة المرفقة لقائمة بنك السودان المعتمدة للعمل مع

البنوك التجارية.



مع أكيد شكري وتقديري...)

م.م عمر فضل الله حمد النيل

الأمين العام (المكلف)



بسم الله الرحمن الرحيم

## مجلس تنظيم بيوت الخبرة للخدمات الاستشارية

### مجال تقييم الأصول

بيان	بيان
<b>اي دي ام للدراسات والاستشارات الهندسية</b> معمارية وتخطيط عمراني - هندسية - تقييم أصول زراعية - نقل تلفونات: ٠٩١٢٣٤٦٤٣٥ - ٠١٥٥٣٠٣٨٣٣ فاكس: ٠١٥٥٣٠٣٩٣٣ بريد الكتروني: <a href="mailto:dmforengineeringconsultancy@gmail.com">dmforengineeringconsultancy@gmail.com</a>	<b>١ سيف الدين السمانى للمراجعة والاستشارات المالية</b> معمارية وتخطيط عمراني - هندسية - تقييم أصول محاسبية - إدارية - إقتصادية مالية - زراعية صناعية تلفون: ٠٩١٢٣٤٥٤٣٣ فاكس: - بريد إلكتروني: <a href="mailto:siefkareem@gmail.com">siefkareem@gmail.com</a>

  
م. م. عمر فضل الله حمد النيل

الأمين العام (المكلف)







العدد المسموع / اعانت حرم / حرم / 3

معنون للمصارف كافة

الموضوع: قائمة بيوت الخبرة لمجال تقييم الأصول والتقييم العقاري

بالإشارة إلى الموضوع اعلاه وخطاب السيد/ أمين عام مجلس تنظيم بيوت الخبرة للخدمات الاستشارية بتاريخ 2016 / 5 / 9 م ،نفيدكم باضافة الجهات المذكورة أدناه لقائمة بيوت الخبرة لمجال تقييم الاصول والتقييم العقاري المعتمدة لدي بنك السودان المركزي:

1/ سيف الدين السمانى للمراجعة والاستشارات المالية

2/ اي دي ام للدراسات والاستشارات الهندسية .

وتفضلوا بقبول وافر الشكر والتقدير،،،

ع / بنك السودان المركزي

  
سوسن الصادق عبدالعزيز

Amir  
امير عبد الوهاب عبد اللطيف

إدارة الشئون المصرية  
الإدارة العامة لتنظيم وتنمية الجهاز المصرفي

التاريخ: 22 جمادى الآخر 1443 هـ

الموافق: 25 يناير 2022 م

التمرة: ب س م / ا ع ت ج م / ش م / 3

معنون إلى جميع المصارف العاملة

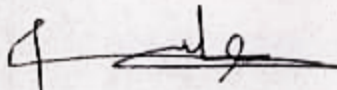
الموضوع: قائمة بيوت الخبرة الاستشارية لمجال تقييم الأصول والتقييم العقاري

بالإشارة الى الموضوع أعلاه، وخطاب السيد/ الامين العام المكلف لمجلس تنظيم بيوت الخبرة للخدمات الاستشارية، نفيدكم بإعتماد بيوت الخبرة أدناه ضمن بيوت الخبرة المعتمدة لدى بنك السودان المركزي لتقييم الأصول والتقييم العقاري :-


1. مجموعة حمدي الاستشارية.
2. فيبا الاستشارية.
3. دار جامعة سنار الاستشارية.
4. اي دي ام للدراسات والاستشارات الهندسية.

وتفضلوا بقبول وافر الشكر والتقدير...

ع/ بنك السودان المركزي



عايدة عوض محمد



بدر الدين عبد اللطيف عبدالله

إدارة الشؤون المصرفية

الإدارة العامة لتنظيم وتنمية الجهاز المصرفي





بِسْمِ اللَّهِ الرَّحْمَنِ الرَّحِيمِ  
جُمْهُورِيَّةُ السُّوْدَانِ



وزارة مجلس الوزراء

مجلس تنظيم بيوت الخبرة للخدمات الإستشارية

شهادة تجديد السجل الإستشاري

التاريخ: ٢٣ يناير ٢٠٢٢ م

بهذا يشهد المجلس بأن السادة /

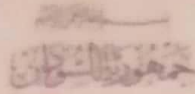
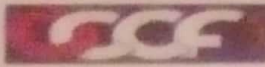
اي دي ام للدراسات والاستشارات الهندسية

قد قام بتجديد تسجيله كبيت خبرة إستشاري بمجلس  
تنظيم بيوت الخبرة للخدمات الإستشارية لمدة عام.  
وذلك إستناداً علي المادة رقم ٧- (١) (ب) من قانون  
المجلس لعام ١٩٩٩م تعديل ٢٠٠٤م تحت السجل  
الإستشاري رقم (٤٢٥) وشهادة تسجيل رقم (٥٢٦) وذلك  
حسب القواعد المنظمة للعمل الاستشاري.

صدر تحت توقيعي وختم المجلس،،،

أ/هناء صلاح الدين محي الدين  
الأمين العام (المكلف)





وزارة مجلس الوزراء

مجلس تنظيم بيوت الخبرة للخدمات الاستشارية

شهادة تجديد السجل الاستشاري

التاريخ: ١١ يناير ٢٠٢٣ م

بهذا يشهد المجلس بأن السادة /

اي دي ام للدراسات والاستشارات الهندسية

قد قام بتجديد تسجيله كبيت خبرة استشاري بمجلس تنظيم بيوت الخبرة للخدمات الاستشارية لمدة عام. وذلك استناداً على العادة رقم ٧ - (١) (ب) من قانون المجلس لعام ١٩٩٩م تعديل ٢٠٠٤م تحت السجل الاستشاري رقم (٤٢٥) وشهادة تسجيل رقم (٥٣٦) وذلك حسب القواعد المنظمة للعمل الاستشاري.

صدر تحت توقيعني وختم المجلس...

أ/هناة صلاح الدين محي الدين  
الأمين العام (المكلف)





جمهورية السودان  
وزارة المالية و التخطيط الاقتصادي  
ديوان الضرائب  
إدارة التسجيل



شهادة تسجيل دافع ضريبة

\*\*\*\*\*أصلية\*\*\*\*\*

نوع دافع الضريبة: اسم عمل ولائي  
الرقم التعريفي الضريبي: 300000244349  
اسم دافع الضريبة / الاسم المسجل: اي دي ام للدراسات و الاستشارات الهندسية  
التسجيل / الرقم الوطني: 100604  
العنوان: الديوم الشرقية عقار رقم 26 الطابق الثاني شقة رقم 2  
ولاية الخرطوم  
محلية الخرطوم  
الخرطوم  
EO/8  
جوار مغسلة النعمة  
سوداني  
تاريخ السريان: 2016/02/04  
تاريخ الإصدار: 2017/03/07

تشهد إدارة التسجيل بأنها قد خصصت الرقم التعريفي الضريبي أعلاه لدافع الضريبة المذكور أعلاه، و ذلك بمقتضى المادة (8) من قانون ضريبة الدخل لسنة 1986م.

و بهذا، فإن أي شخص يزاول أي نشاطاً تجارياً أو صناعياً أو مهنياً أو حرفياً أو خديماً أو نشاطاً غير تجاري يعتبر ملزماً بتقديم طلباً لاستخراج رقمه التعريفي الخاص من إدارة التسجيل بديوان الضرائب .و ذلك لاستخدامه في كافة تعاملاته داخل و خارج ديوان الضرائب.

كما يجب إخطار إدارة التسجيل في حال حدوث أي تغيير يتعلق بنشاط دافع الضريبة.  
أي كشط أو تعديل يلغي هذه الشهادة.

ع /الأمين العام لديوان الضرائب







جمهورية السودان  
وزارة المالية والتخطيط الاقتصادي  
ديوان الضرائب



شهادة الضريبة على القيمة المضافة

\*\*\*\*\*أصلية\*\*\*\*\*

الرقم التعريفي لدافع الضريبة: 300000244349

رقم الملف الضريبي : 300000244349102

اسم دافع الضريبة: اي دي ام للدراسات و الاستشارات الهندسية

رقم التسجيل / الرقم الوطني: 100604

العنوان الجغرافي: امدرمان حي الروضة شرق عقار رقم 237

ولاية الخرطوم

محلية كرري

كرري

جوار سوبر ماركت النسمة

سوداني

تاريخ التسجيل: 2018/02/05

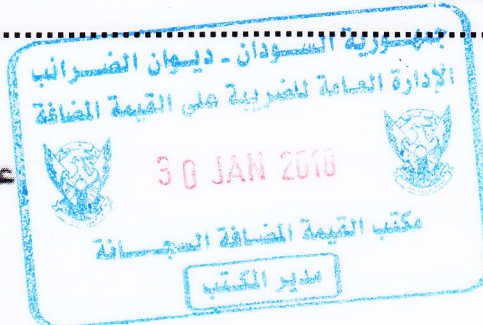
تاريخ الإصدار: 2018/02/05

يشهد الأمين العام لديوان الضرائب بأن المذكور أعلاه قد تم تسجيله بمقتضى أحكام المادة (16) من قانون الضريبة على القيمة المضافة لسنة 2001. وبهذا يعتبر مكلفاً بتحصيل الضريبة و توريدها للمكتب المختص و الالتزام بمتطلبات الضريبة على القيمة المضافة فيما يتعلق بمسك الدفاتر المحاسبية و التعامل بالفواتير.

يسري هذا التكليف اعتباراً من: 2018/02/05

عبد الله المساعد ادريس

الأمين العام لديوان الضرائب







2

جمهورية السودان  
وزارة النقل والطرق والجسور  
الهيئة القومية للطرق والجسور  
NATIONAL HIGHWAY AUTHORITY  
المدير العام  
General Manager

9/1/16

التاريخ 2018/1/16

السيد/ مدير مكتب التنسيق و المتابعة - ولاية شرق دارفور

السلام عليكم و رحمة الله تعالى و بركاته

الموضوع: مراجعة و اعتماد التصميم الخاصة بطرق الضعين الداخلية

اشارة للموضوع اعلاه و لخطابكم بتاريخ 2018/1/14 بالنمرة م و ق د / 61 / هـ 1 و الخاص بمراجعة و اعتماد تصاميم الطرق الداخلية لمدينة الضعين نفيدكم بانه قد تمت مراجعة التصميم و اعتمادها.

وشكرا

23/1/16

م. عبدالرحمن ابراهيم

المدير العام بالاتابة





جمهورية السودان  
وزارة النقل والطرق والجسور  
الهيئة القومية للطرق والجسور  
NATIONAL HIGHWAY AUTHORITY

المدير العام  
General Manager

Date: 25-10-2016

To: Director, Transport & ICT Department,  
African Development Bank  
Attn.: Mr. Amadou Oumarou

Dear Sir,

**Subject: Road Safety Workshop (27-28 October 2016)**

*On the occasion of the Road Safety Workshop, held by the African Development Bank (27-28 October 2016), we would like firstly to express our great thanks for all efforts exerted by the Bank to address such important topic.*

*We highly appreciate your prior acceptance for our nominee (Eng. El Shafei Sayed Ayoub) to attend the workshop.*

*Kindly, we request the acceptance for the attendance of Dr. Adam Mofadal - one of the specialist in our country and currently serve as consultant to the National Highway Authority in all road safety aspects. Dr. Adam shall bear all expenses (accommodation, living and travelling fees). Also, he will be in Abidjan in time.*

Thanks in advance.

Eng. Gaafar Hassan Adam  
Managing Director





جمهورية السودان  
وزارة النقل والطرق والجسور  
الهيئة القومية للطرق والجسور  
NATIONAL HIGHWAY AUTHORITY

المدير العام  
General Manager

Date: 01/12/16

To: **Director**, Thailand Accident Research Centre (TARC), Asian Institute of Technology (AIT)  
Attn.: Prof. Dr. Kunawee Kanitpong  
Dear Prof. Kanitpong

**Subject: Cooperation on Road Safety**

It's really an honor for me knowing about your organization and you through Dr. Adam Mofadal, who currently serves as a consultant to the National Highway Authority (NHA) in all road safety aspects. In fact, we highly appreciate your previous efforts and positive contributions in the two accidents cost analysis studies conducted in Sudan, and also your valuable and useful training sessions to our engineers during the Bridge Inspection, Evaluation and Maintenance training program taken place in the AIT during April – May 2015.

Regarding the road safety situation in Sudan, I would share with you the Sudan ongoing efforts in tackling the road safety problem through the newly established road safety unit within the NHA to promote and facilitate our road safety strategic plan and road safety interventions at short, medium and long-term levels. However, and as has been experienced in many developing countries like Sudan, dealing with road safety situation always need qualified and highly trained road safety, engineers and researchers.

We believe that the shortest way bridging the gaps to our goals will be through our ability to secure intelligent and real partnerships with an outstanding organization such as TARC able to provide training and research environments to our engineers towards establishing similar example here in Sudan in the near future.

We are looking forward to meeting you and your staff soon in road safety training program events that we hope to have part of them to be organized and conducted in Sudan.

Thanks in advance

  
For/ Eng. Gaafar Hassan Adam  
Managing Director







بِسْمِ اللَّهِ الرَّحْمَنِ الرَّحِيمِ

Ministry of Human Resources development

## SUDAN ENGINEERING COUNCIL



### REGISTRATION CERTIFICATE

*This is to certify that:*

**Adam Ibrahim Ali Mofadal**

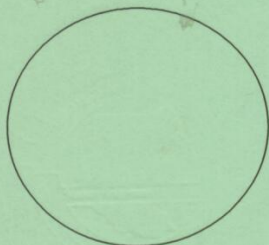
*Has been enrolled on the 24<sup>th</sup> of April 2008 at the Sudan Engineering Council in the Engineer roll as a:*

**Consultant Engineer**

*(Discipline: CIVIL ENGINEERING)*

*And designated the enrollment number (EC/ ER/ CE/ 385) in accordance with article 21(2) of the Engineering Council Act (1998). Hence he is entitled to the title of Consultant Engineer and to put the designation (C.E) before his name.*

*Date of issue: 22 / 05/ 2011.*



*Secretary General*  
**Engr./ AHMED ELSAMANI ELFAKI HASSAN**

*Any alteration renders this certificate void.*





E-OSE/24/793



جمعية المهندسين العمالية  
Oman Society of Engineers

## تصنيف المهندسين

### Engineers Classification

بناء على توصية مجلس تصنيف المهندسين - تمنح جمعية المهندسين العمالية

المهندس / ادم ابراهيم علي مفضل

درجة: مهندس استشاري في تخصص: الهندسة المدنية

On the recommendation of the Engineers Classification Board,  
The Oman Society of Engineers Grants

ENG / Adam Ibrahim Ali Mofadal

The grade of: Consultant Engineer in the field of: Civil Engineering

This certificate issues on : 09/06/2024

This certificate expires on : 10/06/2026



حررت هذه الشهادة بتاريخ : 09/06/2024

انتهاء هذه الشهادة بتاريخ : 10/06/2026

رئيس مجلس الادارة

# Memorandum of Understanding

between

**THE MAPPER CO.,LTD.**  
(THAILAND)

and

**ADM FOR ENGINEERING CONSULTANCY & STUDIES**  
(SUDAN)

This Memorandum of Understanding (MoU) is drawn up and agreed upon to establish the cooperation between THE MAPPER CO.,LTD (hereinafter referred to as **MAPPER**), located at Thailand Science Park, INC1-102 Paholyothin Rd. , Klong Neung, Klong Luang, Pathumthani, Thailand and ADM FOR ENGINEERING CONSULTANCY & STUDIES (hereinafter referred to as **ADM** located in Khartoum, Sudan.

The **MAPPER** is a private company founded in 2003, and is A-level consultant ranked by Ministry of Finance, Thailand. The company was established to help meet the region's growing needs for advanced consulting in engineering, science, technology and spatial management, research and capacity building. MAPPER's mission is to develop highly qualified solution and committed professionals who will play a leading role in the sustainable development of the region and its integration into the global economy.

**ADM FOR ENGINEERING CONSULTANCY & STUDIES** is a private company located in Khartoum, Sudan. The company aims to serve communities with professional consulting services in engineering, science, and projects management and implementation. ADM has excellent facilities for the Engineering Technology.

## ARTICLE I.

### PURPOSE

In order to promote cooperation, knowledge, and technologies transferred between **MAPPER** and **ADM** and as a contribution toward enhancing the already cordial relations existing between Thailand and Sudan, the above two companies agreed to pursue a broad spectrum of cooperative and knowledge endeavors.

## ARTICLE II.

### SCOPE

The scope of activities under this operational MOU are :

1. Project consulting and implementation
2. Collaborative research in specific fields of interest
3. Exchanges of information , technology, and knowledge
4. Other forms of collaboration that may be mutually agreed upon between **MAPPER** and **ADM**.

## ARTICLE III.

### DURATION, TERMINATION, AND AMENDMENT

1. This MoU will be effective from the date of signing by both parties up to a period of Five (5) years, and may be subject to extensions by mutual consent of the parties in writing.
2. Either party may terminate this MoU by giving Six (6) months in advance notice in writing to the other party.
3. The provisions of this MoU may be amended at any time with the mutual consent of the parties in writing.
4. The amendment, termination and expiration of this MoU will not affect the terms of activities ongoing at the time of notification of amendment, termination, and expiration unless otherwise agreed upon between the parties.



**ARTICLE IV. SPECIAL PROVISIONS**

1. Both parties shall exert their best effort to be available for mutual consultation and shall give each other necessary information whenever reasonably requested.
2. The two parties will maintain in close contact so as to ensure the smooth implementation of the programs undertaken under this MoU.
3. Modalities of each type of collaboration, associated activities and financial aspects shall be mutually agreed upon on a case-by-case basis in separate Memorandum of Agreements (MoA).
4. This MoU shall be governed and construed under the laws of the Kingdom of Thailand.
5. The two parties will consult with each other and attempt to resolve disputes or misunderstandings that arise in the administration of this MoU or any subsequent associated agreement informally.

**ARTICLE V. CONTACT PERSONS (DETAILS)**

Dr. Taravudh Tipdecho  
CEO,  
The Mapper Co.,Ltd.  
131 Thailand Science Park  
INC1-102, Klong Luang  
Paholyothin Rd. , Klong Neung,  
Klong Luang, Pathumthani 12120  
Thailand

Dr. Adam Mofaddal  
CEO,  
ADM FOR ENGINEERING CONSULTANCY & STUDIES  
Khartoum -P.O. Box 6717  
Sudan

This MoU is prepared in two identical copies. Each party holds one original copy duly signed by the CEO of MAPPER and ADM.

**Signed for and on behalf of:**

**THE MAPPER CO.,LTD.**

**ADM FOR ENGINEERING CONSULTANCY &  
STUDIES**



\_\_\_\_\_  
Dr.Taravudh Tipdecho  
CEO



\_\_\_\_\_  
Dr. Adam Mofaddal  
CEO

Date: 19/March/2016

Date: 19/March/2016

## The Mapper Co.,Ltd.

We are consultant company established in 1993 with 6 MB investment cost. The objective is to be R&D unit serving for monitoring, modeling, and simulation in MIS & GIS environments. Since then, there have been many organizations to be served by us for example Royal Irrigation Department (RID), Department of Tourism (DOT), Department of Agriculture (DOA), Housing Authority of Thailand (HA), and Provincial units through Municipalities.

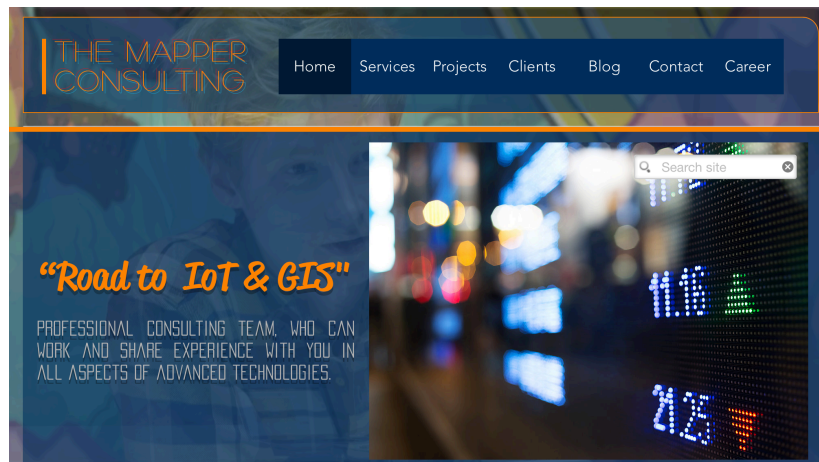
With capable staffs working since the first day, we are confident in our skill, and team spirit to drive the quality of work to our customer.

*National / International Professional Award:*

- Winner Prize, *Thailand ICT Award 2009 (R&D)*, THAILAND
- Runner-up, *International Asia Pacific ICT Awards APICTA 2009*, AUSTRALIA
- The 2<sup>nd</sup> ranked Prize, *Thailand ICT Award 2011 (R&D)*, THAILAND

Contact us: (Tel) 01-564-7200 ext 5102 , (Fax) 02-564-7834

Website : <http://www.themapper.info>





**The Mapper Co.,Ltd.**

*Geomatic Engineering : Software Engineering  
Simulation Technology : Advanced Technology*

INC1-102, 1st Floor  
131 Innovation Cluster 1., Thailand Science Park  
Phahonyothin Rd., Klong 1, Klong Luang.  
Pathumthani 12120, Thailand.  
Tel: 66 (2) 564-7200 ext. 5102  
Fax: 66 (2) 564-7834

**Selected projects in the past (2003-2015)**

<b>Name of Project</b>	<b>Client</b>	<b>Country</b>	<b>Contract Amount (Baht)</b>	<b>Source of Fund</b>	<b>Contract Period</b>	<b>Description of Work</b>
Statistical Map Data Center Development	National Statistical Office	Thailand	17,000,000	Royal Thai Government	1 year	To study, design, and develop a statistical map datacenter for country, in which provides spatial data, demographic data, and related data layers including aerial photograph covering whole country. The designed system is run through cloud system and can be accessed from any devices.
Statistical (EA) Household Data Development	National Statistical Office	Thailand	13,000,000	Royal Thai Government	10 months	Household data is required for national census in coming year 2019. The project focuses on household map data which represent for 30,000,000 units of houses approximately. Digital data finally is resulted and being prepared for next census.
Thailand Tourist Information System Development	DASTA	Thailand	23,000,000	Royal Thai Government	1 year	The project aims to develop a central database system located for tourist destination, restaurant, and tour facilities including hotels in Thailand. Specific advanced sensor is also designed and install at popular destination for counting a number of tourist in particular sites.
Dynamic Modeling for Water Quality Monitoring and Management	Regional Environmental Office	Thailand	4,800,000	The Office of Environmental Fund	1 year	Hydrological survey and study (quality & quantity), then establish 5 stations for WQ monitoring. There are five probes to be configured and defined as monitoring stations.





**The Mapper Co.,Ltd.**

*Geomatic Engineering : Software Engineering  
Simulation Technology : Advanced Technology*

INC1-102, 1st Floor  
131 Innovation Cluster 1., Thailand Science Park  
Phahonyothin Rd., Klong 1, Klong Luang.  
Pathumthani 12120, Thailand.  
Tel: 66 (2) 564-7200 ext. 5102  
Fax: 66 (2) 564-7834

<b>Name of Project</b>	<b>Client</b>	<b>Country</b>	<b>Contract Amount (Baht)</b>	<b>Source of Fund</b>	<b>Contract Period</b>	<b>Description of Work</b>
Sustainable Tourism Database Study	DASTA	Thailand	3,500,000	Royal Thai Government	10 months	Study and design the database to carry all sites evaluated and ranked through expert system. Finally, the priority destination area can be defined.
JICA Project (Environmental issue study for 5 provinces)	Oriental Consultant Co., Ltd.	Japan	1,000,000	JICA, Japan	2 months	To explore and collect all environmental issues related to 5 provinces in western region of Thailand. The acquired data was reorganized and configured into Spatial Data Format.
Water Quality Monitoring for BKK's sewage network	SAMART Corporation Group	Thailand	1,500,000	Bangkok Metropolitan Authority	3 months	To develop an integrated system among sensor's attributes and geo-location to be monitored through networks by map and its attribute.

see more projects at <http://www.themapper.info>

## Our Clients:





GET INFORMATION ABOUT  
ANYTHING , ANYWHERE ,  
ANYTIME. HAPPY  
CUSTOMER, HAPPY WE !



## What is geo notification ?

A notification that a target user gets when he arrives at a particular location registered for notification. The advertiser can share relevant information to its user with help of this notification.



## How does it work ?

1. Download the application
2. Put on the location services
3. Get a notification !

## How does it benefit you ?

Get instant information of nearby objects. For example : What is selling ? Any ongoing promotion ? Any interesting message by the advertiser.



## WHAT CAN IT OFFER ?





## Case Studies



### Geofence Triggered Mobile Coupons – Case Study MetroPCS

Metro PCS tried to reach mobile customers on their current devices and offer incentive to visit store near them and switch or upgrade.

By mixing dynamic ads around a radius of the retail location that were hotspots of desired customers we helped show ads with relevance. The messaging provided was for multiple savings offers and created mobile coupons with easy open and saving and sharing features for all devices.

### Domino's – Geofences For Mobile Ads Around Hotels

In the highly competitive industry of pizza delivery, Domino's is trying to reach hotel guests on their mobile device and link to multiple ordering options for easy purchase.



Geofencing the hotels has given the ability to run different ads through out the campaign some being just for that particular audience. From an ad click the mobile user goes to a special landing page with multiple options for ordering and app download and finding the nearest location.

### Geofence Case Studies – Employment Recruiting



A recruitment company in California used Geofencing for finding qualified applicants who currently worked as properly licensed truck drivers along I-5 in California.

Geofence rest areas and popular stops along route with a radius of around 3,000 ft. Deliver messaging within applications with call to action of signing bonus and linking to company career page and job posting.

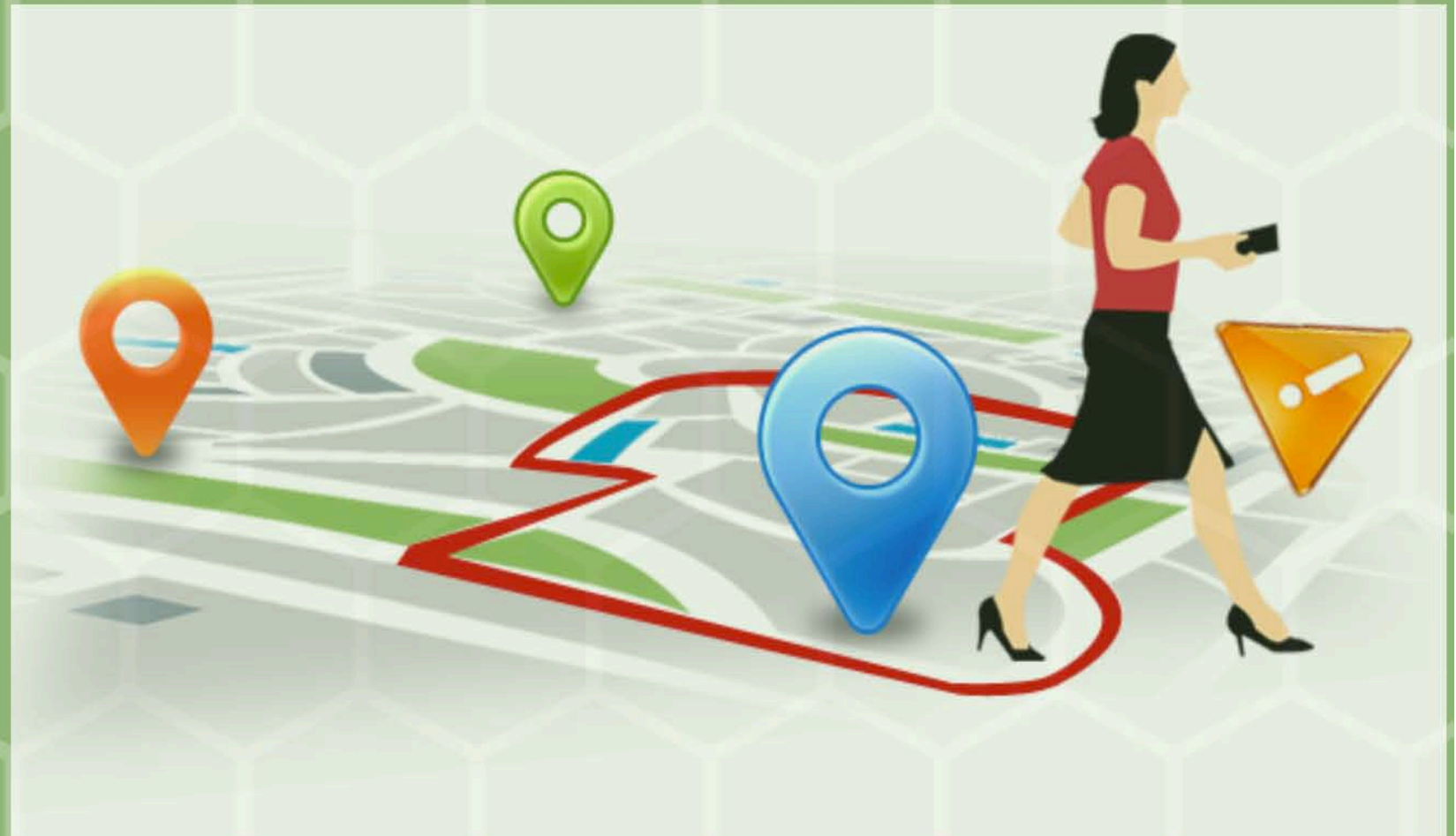
## CONTACT

[www.themapper.info](http://www.themapper.info)

Email : [taravudh@gmail.com](mailto:taravudh@gmail.com)  
[mappercompany@gmail.com](mailto:mappercompany@gmail.com)

THE MAPPER CO.,LTD.  
Thailand Science Park, INC1-102  
Klong Nung, Klong Luang,  
Pathumthani  
THAILAND 12120  
Tel : +6681-425-8520

# Geo NOTIFICATION





“

Beacon revolution will change the way people see information sharing.

”

## Where can we use Beacons ?

- Museum
- Supermarket shop
- Hospital
- University
- Transport

## Benefit

Power Consumption: . It can last up to 3 years on a single coin cell battery.

Lower Cost: BLE is 60-80% cheaper than traditional Bluetooth.

Application: BLE is ideal for simple applications requiring small periodic transfers of data.

Classic Bluetooth is preferred for more complex applications requiring consistent communication and more data throughput.

## Case Study : Orlando Airport



Orlando International has built a network of beacons that transmit directions to check-in desks, security stations, baggage claim and more to travellers, with more than 1,000 separate destinations available within the airport itself.

In addition, the airport now transmits live departure and arrival information directly to smartphones – no more missed departures.

## Case Study : Tesco UK

Some users are understandably concerned about certain aspects of beacon networks, so when UK retailer Tesco began trialling location marketing in stores, they knew they would have to have to approach customers carefully and build trust over time.



Rather than bombarding users with offers right away, the store began with simple welcome messages, and providing instructions when a customer arrives in store to collect goods they have ordered online.

## Address

www.themapper.info  
THE MAPPER CO.,LTD.  
Thailand Science Park, INC1-102  
Klong Nung, Klong Luang,  
Pathumthani  
THAILAND 12120  
Tel : +6681-425-8520

## Email

taravudh@gmail.com  
mappercompany@gmail.com



# The Mapper

We assist customers to benefit from the latest beacon technology.



“

Beacon revolution will change the way people see information sharing.

”

## Where can we use Beacons ?

- Museum
- Supermarket shop
- Hospital
- University
- Transport

## Benefit

Power Consumption: . It can last up to 3 years on a single coin cell battery.

Lower Cost: BLE is 60-80% cheaper than traditional Bluetooth.

Application: BLE is ideal for simple applications requiring small periodic transfers of data.

Classic Bluetooth is preferred for more complex applications requiring consistent communication and more data throughput.

## Case Study : Orlando Airport



Orlando International has built a network of beacons that transmit directions to check-in desks, security stations, baggage claim and more to travellers, with more than 1,000 separate destinations available within the airport itself.

In addition, the airport now transmits live departure and arrival information directly to smartphones – no more missed departures.

## Case Study : Tesco UK

Some users are understandably concerned about certain aspects of beacon networks, so when UK retailer Tesco began trialling location marketing in stores, they knew they would have to have to approach customers carefully and build trust over time.



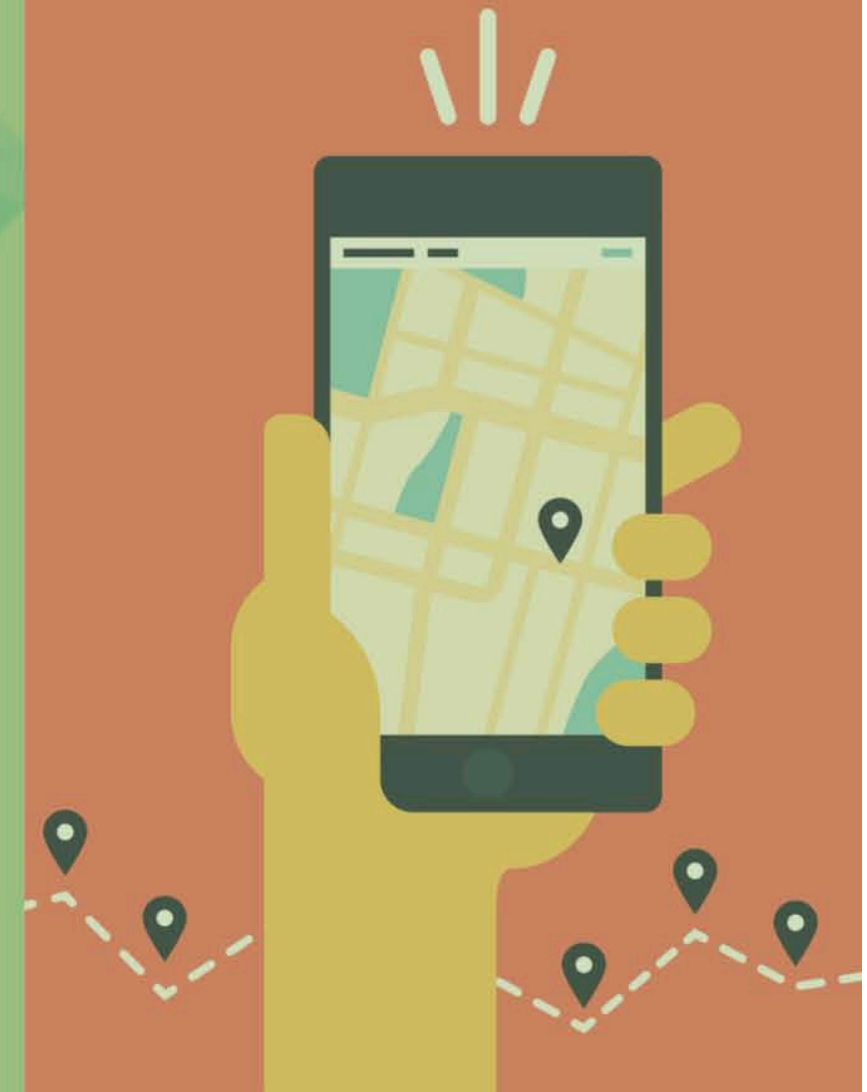
Rather than bombarding users with offers right away, the store began with simple welcome messages, and providing instructions when a customer arrives in store to collect goods they have ordered online.

## Address

www.themapper.info  
THE MAPPER CO.,LTD.  
Thailand Science Park, INC1-102  
Klong Nung, Klong Luang,  
Pathumthani  
THAILAND 12120  
Tel : +6681-425-8520

## Email

taravudh@gmail.com  
mappercompany@gmail.com



# The Mapper

We assist customers to benefit from the latest beacon technology.



## How Beacons work ?

- 1 Retailers strategically place the beacons around the store
- 2 Put on your bluetooth. The Beacons connect to a customer's Bluetooth enabled smartphone app.
- 3 The user is notified through a notification and when the user taps he gets the related information
- 4 The retailer can provide the customer with various ongoing sales and discount or the required information he wants to be delivered to the customer.

## What can a Beacon do ?

- **Customer Tracking**

Keep you updated about your customer preferences and preferred products

- **In Shop Promotions and Advertisements**

By keeping the customers updated about the ongoing promotions in your shop when they are around will increase the chances of customer inflow

- **Customer Engagement**

Keeping your customer engaged when they enter or leave your shop by asking for a feed back or their preferred products can help the shop to study their customers and requirements in a better way.

- **Authorised access**

Beacon technology can also help you to maintain an authorized access.

## What is Beacon ?

liBeacon is Apple's version of the bluetooth based beacon concept. Which allows Bluetooth devices to broadcast or receive tiny and static pieces of data within short distances. In other words, it consists of two parts: a broadcaster (beacon device) and a receiver (smartphone app).

## What is a Bluetooth Low Energy (BLE) ?

Bluetooth Low Energy is a wireless personal area network technology used for transmitting data over short distances. As the name implies, it's designed for low energy consumption and cost, while maintaining a communication range similar to that of its predecessor, Classic Bluetooth.

